

Why Do We Need Resource Advisors and Roles and Responsibilities of the Resource Advisor

Southeast Resource Advisor Training

August 30 and 31, 2021

Steve Werndli, FKNMS Enforcement Coordinator

Summary

- Recent history of and why we need Resource Advisors
- What is the role of a Resource Advisor

Resource Advisor Program

PR Debris Locations

Write a description for your map.

Legend

- Feature 1
- Feature 2



Emergency Support Function 10 (ESF-10)

Mission is to mitigate pollution threats from vessels displaced by storms

- Unified Command
 - United States Coast Guard
 - Environmental Protection Agency (dependent on type of debris and location)
 - State Resource Management Agency



ESF-10 Environmental Unit



10 November 2017.v4

REGULATORY REQUIREMENTS AND BEST MANAGEMENT PRACTICES (BMPs) HURRICANE IRMA USCG ESF-10 RESPONSE FLORIDA

Sensitive Habitats, Wildlife, and Fisheries Resources

- ☐ Avoid and minimize disturbance to sensitive shoreline and benthic habitats including: mangroves, salt marshes, beaches, tidal flats, natural rocky shorelines, seagrasses, hard-bottom reefs, coral reefs, and oyster beds.
- ☐ Avoid and minimize disturbance to all wildlife and fisheries species and their habitats including: nesting and migratory birds (seabirds, shorebirds, wading birds, etc.), marine mammals, land mammals, marine and coastal reptiles, fish, shellfish, and other marine and coastal invertebrates.

USACE Section 404 Clean Water Act and Section 10 Rivers and Harbors Act Permits

- ☐ No significant disturbance of sediment required for the removal of debris or vessels (permit required otherwise, contact the Environmental Unit/EU).

Florida DEP Environmental Resource Permitting

- ☐ No filling of wetlands or other surface waters, or dredging that creates or expands surface waters (permit required otherwise, contact EU). All material removed must be deposited on self-contained uplands and managed in accordance with FDEP rules or provisions of the current Emergency Order.

Mangroves:

- ☐ Incidental trimming or alteration of mangroves may occur to perform vessel removal and pollution recovery activities associated with ESF-10 FL operations. No separate authorization pursuant to Sections 403.9321-403.9333, Florida Statutes (Mangrove Trimming and Preservation Act) is required.
- ☐ All operations shall be conducted in accordance with the *FDEP Emergency Field Authorization #0358553-001-EE* and *Job-Aid for Hurricane Irma ESF-10 Vessel Removal Operations in Mangroves and Adjacent to Sensitive Shallow Habitats*.
- ☐ Consult with the EU and/or NRA to assist with vessel removal operations from mangroves as needed.

NOAA Florida Keys National Marine Sanctuary General Permit

- ☐ All above and below resource protection requirements and BMPs apply.
- ☐ All materials associated with the response must be removed from the seafloor within 15 days of the completion of operations.

Florida SHPO Section 106 National Historic Preservation Act

- ☐ Cease all activities involving subsurface disturbance, and immediately contact the EU, if prehistoric/historic artifacts, such as pottery or ceramics, projectile points, dugout canoes, metal implements, historic building materials, or any other physical remains that could be associated with Native American, early European, or American settlement are encountered at any time (and leave all artifacts in place). Response activities shall not resume without verbal and/or written authorization. In the event that unmarked human remains are encountered during response activities, stop all work immediately and report to the Unified Command (UC) and EU through your chain of command.
- ☐ Contact the EU prior to conducting any removal or recovery efforts that require substantial ground disturbance beyond the initial disturbance caused by the disaster event (additional SHPO coordination required).

Tribal Coordination

- ☐ Seminole Tribe of Florida – the same BMPs above from the Florida SHPO apply for the Seminole Tribe of Florida's THPO (coordinate with both).
- ☐ Seminole Nation of Oklahoma – no recommendations/concerns.
- ☐ Miccosukee Tribe of Indians of Florida - additional guidance may be forthcoming.

Environmental Unit

- Identify resources at risk
- Conduct required consultations
- Develop Best Management Practices

Special Places



Irma ESF-10 Florida Environmental Unit



Environmental Unit

- Guidelines for removal operations in sensitive shallow habitats
- Guidelines for removal operations in mangrove areas
- Obtain field authorizations for removal activities exceeding established thresholds
- Develop the Resource Advisor Program



Resource Advisors



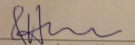
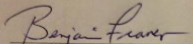
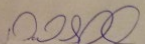
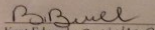
Irma ESF-10 Florida Resource Advisor Program



Environmental Unit - Resource Advisor (RA) Program

- Established operating procedures for RA
- Address RA safety
- Create Job-Aids
- Provide training

UNITED STATES COAST GUARD
EMERGENCY SUPPORT FUNCTION-10
HURRICANE IRMA, FLORIDA
NATURAL RESOURCE ADVISOR GUIDE

 Commander JoAnne Hanson United States Coast Guard	<u>30SEP2017</u> Date
 Benjamin Franco United States Environmental Protection Agency	<u>29SEP17</u> Date
 Captain David Schaller Florida Fish and Wildlife Conservation Commission	<u>29 SEP 2017</u> Date
 Kent Edwards Brigitte Rexell Florida Department of Environmental Protection	<u>9-29-17</u> Date

What Is A Resource Advisor

Provide guidance that supports the response, while considering impacts to sensitive to natural, cultural, and other resources.

- Communicate specialized resource management knowledge to response personnel in dynamic and often fluid situations (not science speak).
- Perform the same or similar duties as your regular job, but in the incident response environment.
- Function as a generalist when not an expert on a topic. It is essential that you are able to provide input on resources outside your area of expertise by contacting SMEs, rapidly investigating a topic, or ordering the necessary personnel.
- Ability to work in a challenging environment (weather extremes, potentially hazardous assignments, remote locations).

Resource Advisor Roles



- Provide professional knowledge and expertise for protecting natural and cultural resources.
- Provide recommendations during planning for operations.
- Coordinate with local specialists to identify potential impacts.
- Identify potential resource issues that may occur.

Resource Advisor Roles



- Provide real-time field recommendations.
- Interpret Best Management Practices (BMP) and their application.
- Identify tactical approaches to minimize impacts.
- Anticipate resource impacts as operations evolve.

Resource Advisor Roles



- Monitor and document the implementation of BMPs.
- Document potential and actual resource impacts and the rationale for unavoidable impacts.

Resource Advisor Roles

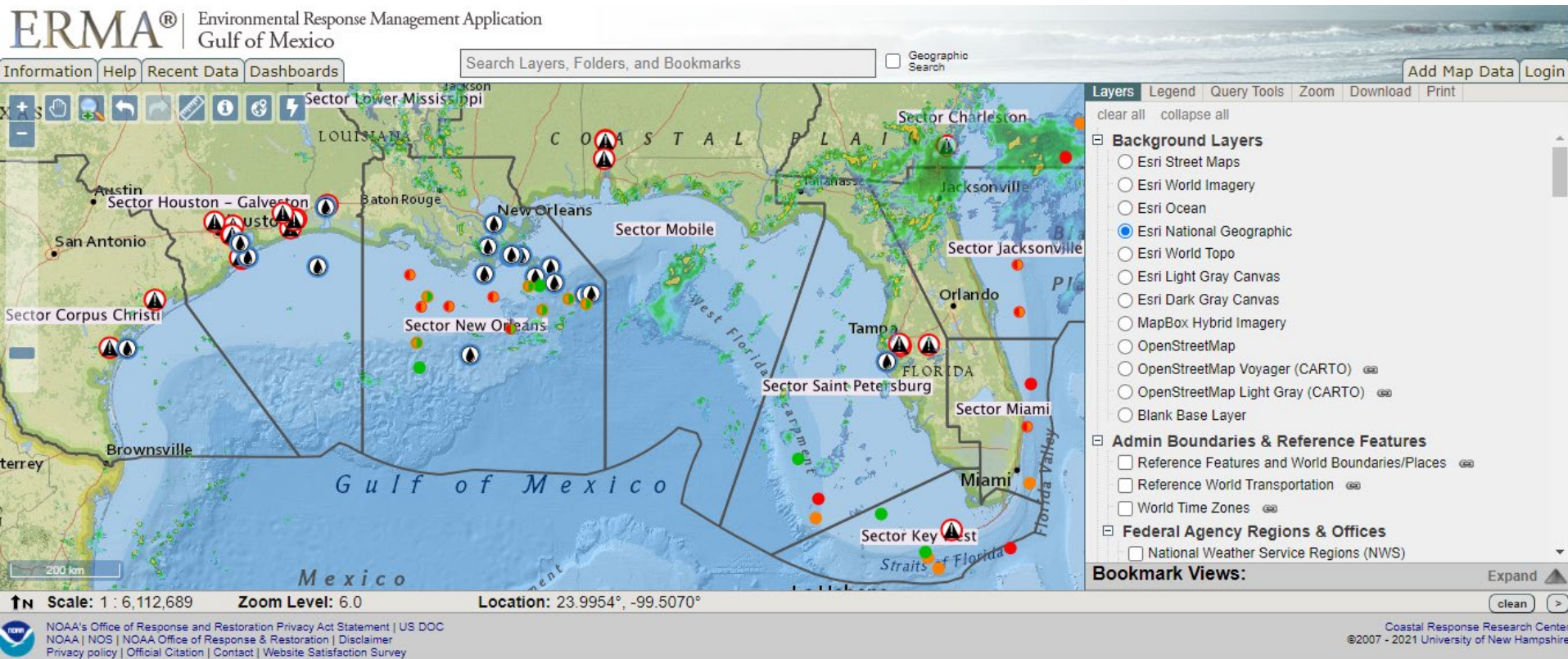
- The Resource Advisor role is to provide high quality, concise and consistent guidance that supports incident response operations, while considering impacts to sensitive to natural, cultural, and other resources.
- Although protection of resources is a priority, when that cannot be fully accomplished, the Resource Advisor should make recommendations to reduce and minimize those impacts, especially within the context of the established BMPs.
- The Resource Advisor documents the actions taken, including the implementation of BMPs and the avoidance and minimization of resource impacts.
- If Resource Advisors observe significant resource impacts or a failure to follow and implement BMPs, they are to contact the Resource Advisor Leader immediately.

The Resource Advisor is an advisor, not the decision maker.

Poll Question: Following Best Management Practices, Yes or No?

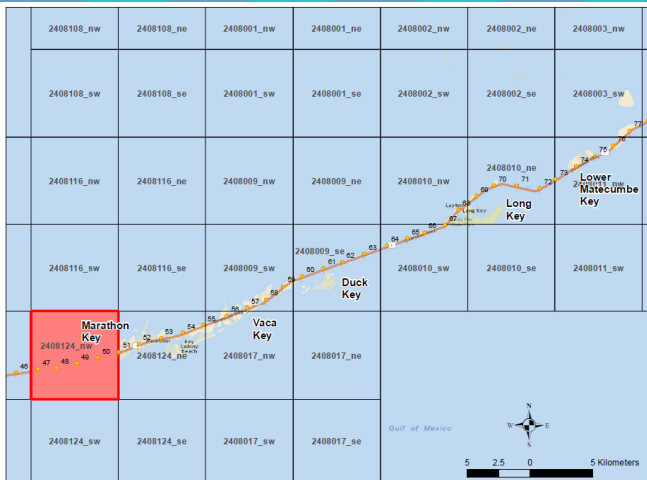


Resource Advisor Roles

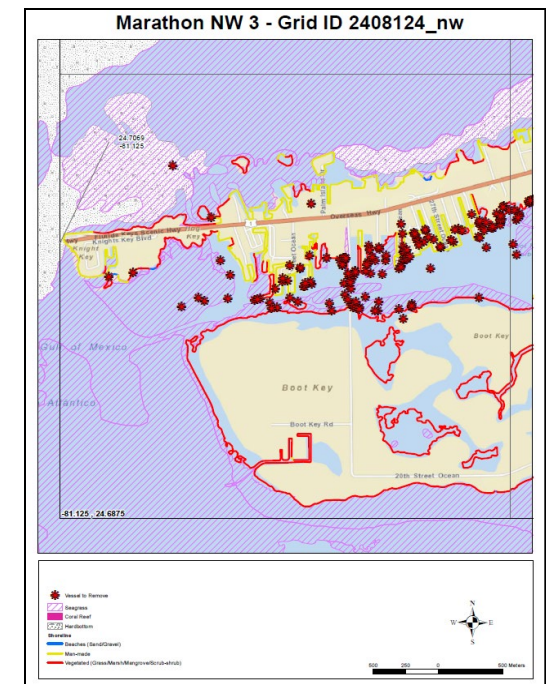
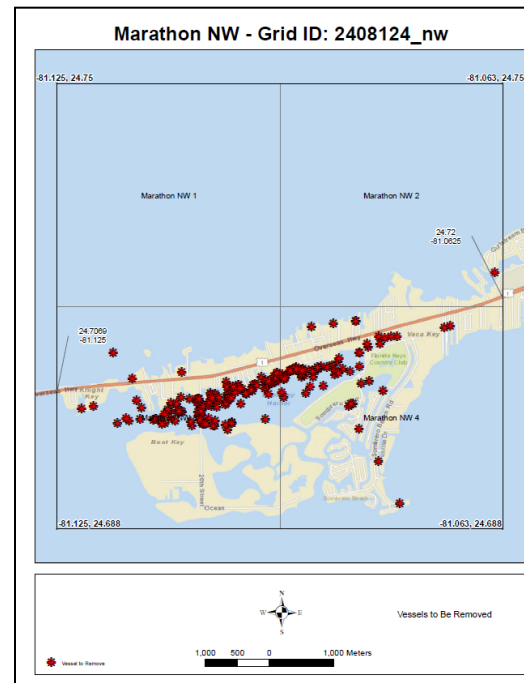


Resource Advisor Roles

Assessment and Removal Grid Packages

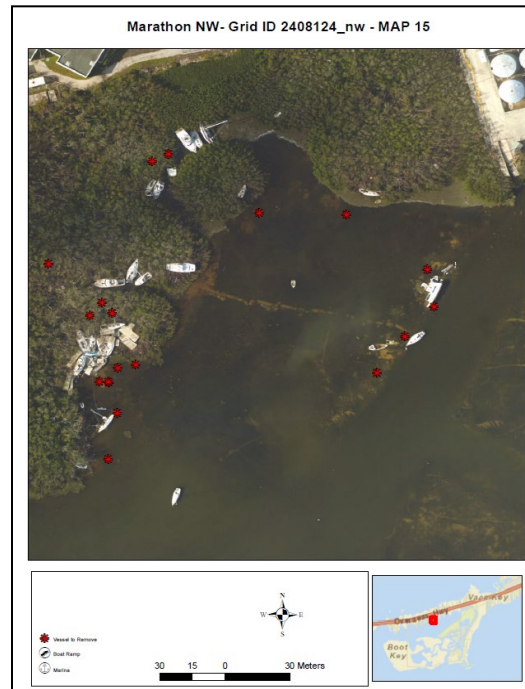
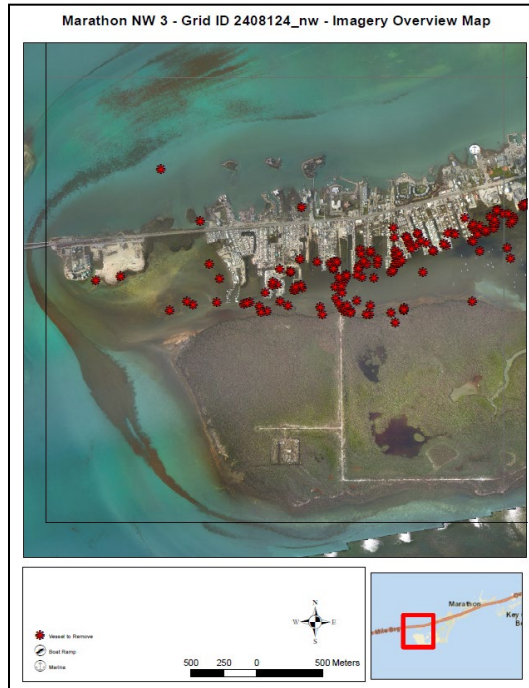


KW - Middle Keys (Lower Matecumbe Key to Marathon Key) 10/4/2017



Resource Advisor Roles

Assessment and Removal Grid Packages



Resources at Risk:

Grid ID: Marathon NW (2408124_nw)

T&E Species (FE = Federally endangered, FT = Federally threatened, SE = Florida State endangered, ST = Florida State threatened):

Birds: Black Skimmer (ST), Florida Burrowing Owl (ST), Least Tern (ST)

Fish: Key silverside (ST), Smalltooth sawfish (FE), Nassau grouper (FT)

Plants: Garber's spurge (FT, SE)

Terrestrial Invertebrates: None

Marine Mammals: West Indian manatee (FT)

Reptiles: Green sea turtle (FT), Hawksbill sea turtle (FE), Kemp's ridley sea turtle (FE), Leatherback sea turtle (FE), Loggerhead sea turtle (FT)

Terrestrial Mammals: None

Corals: Elkhorn coral (FT), Staghorn coral (FT)

Critical Habitat:

- Elkhorn and staghorn corals – Nearshore Atlantic waters
- Loggerhead sea turtle – Atlantic waters

Key Shoreline: Mangroves, Salt marshes

Benthic: Seagrass, Hardbottom

Management Areas:

- Florida Keys National Marine Sanctuary

Best Management Practices (BMPs) For Field Assessments (see attached checklist):

Sensitive Shoreline Habitats

Mangroves – avoid or minimize disturbance to mangrove habitats.

Salt marsh – avoid or minimize disturbance to salt marsh habitats.

Sand beaches – be aware of potential sea turtle nesting on the supratidal portions of beaches (upper drier portion of beaches, above normal high tide line), avoid disturbing marked nests, eggs, and hatchlings. Be aware of the potential for unmarked nests.

Sensitive Benthic Habitats

Seagrasses – avoid or minimize disturbance of seagrass habitats.

Hardbottom – avoid or minimize disturbance of hardbottom habitats.

Resource Advisor Roles

1. Incident Name IRMA ESF-10 Florida	2. Operational Period (Date/Time) From: 01 NOV 17 0800 To: 03 NOV 17 0800	Critical Information Requirements ICS 202B
3. Critical Information Requirements:		
Immediately notify UC of:		
<ul style="list-style-type: none"> - Loss in accountability of personnel. - Fatalities and/or injuries beyond first aid. - Discovery of remains within Branch operations. - Conditions that warrant suspension of operations. - Environmental resource damages resulting from response actions. - Any release or discharge resulting from response actions. - Wildlife impacts resulting from response actions. - Cultural/historical/tribal impacts and/or concerns. - Vessel removed from a marina or private dock. - Natural Resource Advisor (NRA) concerns over Best Management Practices (BMP). - Proposals to alter work hours at any Branch. - Requests for information or stated concerns. - Interactions between the public and response actions. - 25% of MA ceiling. - Commercial purchases greater than \$10K. - PRFAs greater than \$25K. - BOAs greater than \$50K. 		
4. Prepared by: (Deputy Planning Section Chief) LT Joshua Weidman		Date/Time 31 OCT 17 0700
Critical Information Requirements		ICS 202B (rev 07/2012)

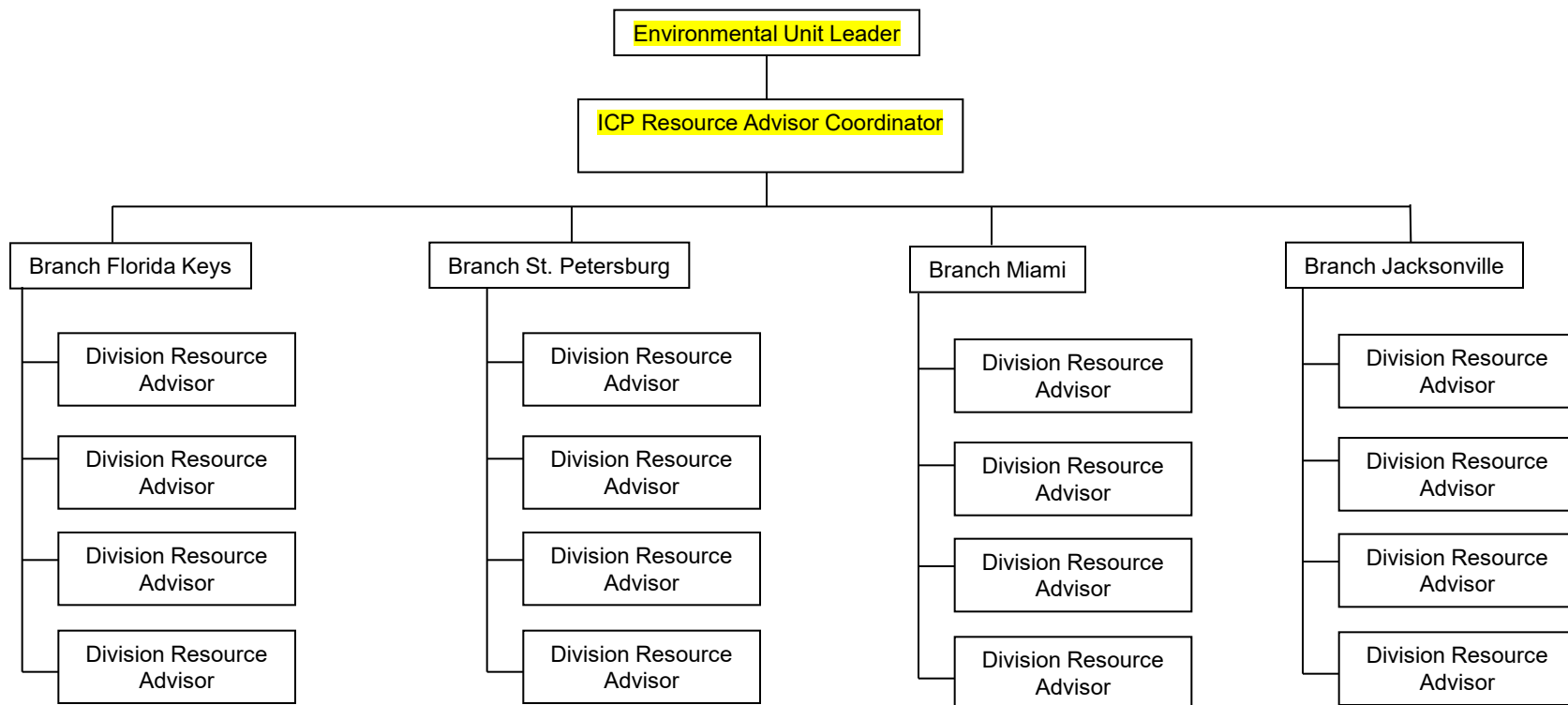
Where Do Resource Advisors Work

1. Incident Name
IRMA ESF-10 FL

2. Operational Period (Date/Time)
From: 11/03/2017 08:00 to: 11/05/2017 08:00

INCIDENT ORGANIZATION
CHART ICS-207-CG

3.



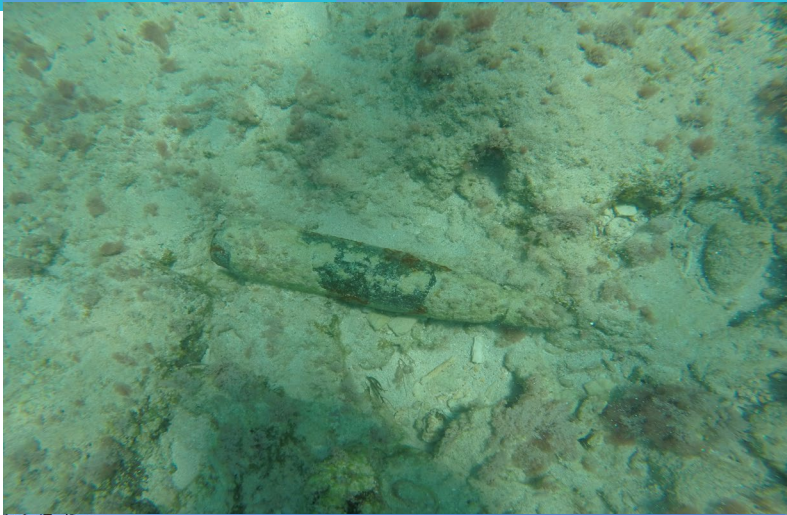
4. Prepared By: (ICP NRA Coordinator/Environmental Unit)
Steve Werndli

5. Date/Time Prepared:
01 NOV 2017 1617

Where Do Resource Advisors Work



Where Do Resource Advisors Work



How Do Resource Advisors Report To Work

1. Incident Name IRMA ESF-10 Florida		2. Operational Period (Date/Time) From: 01 NOV 17 0600 To: 03 NOV 17 0800		Assignment List ICS 204-CG	
3. Branch Jacksonville - FEMA Branch II-III		4. Division/Group/Staging Vessel Response			
5. Operations Personnel					
Name		Affiliation		Contact # (s)	
Operations Section Chief: LTJG Samantha Cardoza		USCG		(609) 694-4881	
Deputy Operations Section Chief: MSTC Sheridan McGiellan		USCG		(251) 425-2348	
Branch Director: LT Jessica Thornton		USCG		(267) 221-6468	
Deputy Branch Director: MSTCN Allen Gameau		USCG		(410) 375-1523	
6. Resources Assigned X indicates LAR attachment with additional instructions					
Strike Team/Task Force/Resource Identifier	Leader	Contact Info. #	# Of Persons	Reporting Info/Notes/Remarks	

5. Operations Personnel	Name	Affiliation	Contact # (s)
Operations Section Chief:	LTJG Samantha Cardoza	USCG	(609) 694-4881
Deputy Operations Section Chief:	MSTC Sheridan McGiellan	USCG	(251) 425-2348
Branch Director:	LT Jessica Thornton	USCG	(267) 221-6468
Deputy Branch Director:	MSTCN Allen Gameau	USCG	(410) 375-1523

1. Ensure FWC Officer and, if required, an NRA representative are present during removal operations.
 2. Ensure FWC Officer authorizes all removal operations in or near marinas and document direction on ICS 214.
 3. Monitor progress of all ESF-10 vessel removal operations.
 4. Review and implement the resource protection Regulatory Requirements and BMPs and coordinate with NRA POCs.

8. Special Instructions

Definition of Terms:
 Recovery: Refers to the removal of pollution hazards from a vessel which may include: oil, gas, batteries, and any other items found on the vessel that could present an environmental hazard.
 Removal: Refers to the recovery of pollutants and the physical removal of the vessel from the water and/or placement in an FWC approved staging or disposal area.

9. Communications (radio and/or phone contact numbers needed for this assignment)

Assignment	Phone
ESF-10 Safety Officer	(261) 366-1450
ESF-10 Operations Section Desk	(305) 371-4205
ESF-10 Situation Unit Desk	(305) 371-4284

Emergency Communications

Medical 911 _____ Evacuation _____ Other _____

10. Prepared by: MSSR2 Shannon McGregor Date/Time: 31 OCT 17 1600

11. Reviewed by (PSC): LCDR Jeffrey Rubin Date/Time: 31 OCT 17 1500

12. Reviewed by (OSC): LTJG Samantha Cardoza Date/Time: 31 OCT 17 1600

ASSIGNMENT LIST (ICS 204-CG)

How Do Resource Advisors Report To Work



1. Incident Name IRMA ESF-10 Florida		2. Operational Period (Date/Time) From: 01 NOV 17 0600 To: 03 NOV 17 0800		Assignment List ICS 204-CG	
3. Branch Jacksonville - FEMA Branch II-II		4. Division/Group/Staging Vessel Response			
5. Operations Personnel					
Name		Affiliation		Contact # (s)	
Operations Section Chief: LTJG Samantha Cardoza		USCG		(609) 894-4881	
Deputy Operations Section Chief: MSTC Sheridan McClellan		USCG		(251) 425-2348	
Branch Director: LT Jessica Thornton		USCG		(267) 221-6468	
Deputy Branch Director: MSTCN Allen Garneau		USCG		(410) 375-1523	
6. Resources Assigned X indicates ZU4a attachment with additional instructions					
Strike Team/Task Force/Resource Identifier	Leader	Contact Info. #	# Of Persons	Reporting Info/Notes/Remarks	
Vessel Response Team #1	MST1 Tonya Muhern	(757) 286-4786	3	FWC POC: OFC Jon Culbreath (904) 591-1798	
Vessel Response Team #2	MST1 Robert Feus	(512) 604-7209	3	FWC POC: OFC Mario Burtolami (385) 481-3936	
NRA Advisor	Scott Eastman	(904) 823-4516	1	Jax North and Central Division	

6. Resources Assigned X indicates ZU4a attachment with additional instructions					
Strike Team/Task Force/Resource Identifier	Leader	Contact Info. #	# Of Persons	Reporting Info/Notes/Remarks	
Vessel Response Team #1	MST1 Tonya Muhern	(757) 286-4786	3	FWC POC: OFC Jon Culbreath (904) 591-1798	
Vessel Response Team #2	MST1 Robert Feus	(512) 604-7209	3	FWC POC: OFC Mario Burtolami (385) 481-3936	
NRA Advisor	Scott Eastman	(904) 823-4516	1	Jax North and Central Division	

7. Work Assignments					
9. Communications (radio and/or phone contact numbers needed for this assignment)					
Assignment		Phone			
ESF-10 Safety Officer		(251) 366-1450			
ESF-10 Operations Section Desk		(305) 371-4205			
ESF-10 Situation Unit Desk		(305) 371-4284			
Emergency Communications					
Medical 911		Evacuation		Other	
10. Prepared by: MSSR2 Shannon McGregor		11. Reviewed by (PSC): LCDR Jeffrey Rubin		12. Reviewed by (OSC): LTJG Samantha Cardoza	
Date/Time 31 OCT 17 1600		Date/Time 31 OCT 17 1500		Date/Time 31 OCT 17 1600	
ASSIGNMENT LIST (ICS 204-CG)					

How Do Resource Advisors Report To Work



1. Incident Name IRMA ESF-10 Florida		2. Operational Period (Date/Time) From: 01 NOV 17 0600 To: 03 NOV 17 0800		Assignment List ICS 204-CG	
3. Branch Jacksonville - FEMA Branch II-III		4. Division/Group/Staging Vessel Response			
5. Operations Personnel					
Name		Affiliation		Contact # (s)	
Operations Section Chief: LTJG Samantha Cardoza		USCG		(609) 894-4881	
Deputy Operations Section Chief: MSTC Sheridan McCrellin		USCG		(251) 425-2348	
Branch Director: LT Jessica Thornton		USCG		(267) 221-6468	
Deputy Branch Director: MSTCN Allen Garneau		USCG		(410) 375-1522	
6. Resources Assigned X indicates LAR attachment with additional instructions					
Strike Team/Task Force/Resource Identifier	Leader	Contact Info. #	# Of Persons	Reporting Info/Notes/Remarks	
Vessel Response Team #1	MT11 Tanya Muhem	(257) 266-4786	3	FWC POC: OFC Jon Culbreath (904) 591-1795	
Vessel Response Team #2	MT11 Robert Feas	(512) 604-7209	3	FWC POC: OFC Mario Bertolami (385) 481-3935	
NRA Advisor	Scott Eastman	(814) 823-4515	1	Jax North and Central Division	
7. Work Assignments					
<p>Vessel Response Team #1: North Division (Duval County)</p> <ul style="list-style-type: none"> Day 1 - Continue vessel removal operations for F/V SWAMP FOX in Trout River, grid 3008135_SE, 1 OSRO. Day 2 - Complete vessel removal operations for F/V SWAMP FOX in Trout River, grid 3008135_SE, 2 OSROs. Ensure safe transport of vessel to staging area. <p>Vessel Response Team #2: Canaveral Division (Brevard County)</p> <ul style="list-style-type: none"> Day 1 - Mobilize resources in Cape Canaveral. Day 2 - Conduct HAZMAT recovery and vessel removal operations in Banana River, grids 2806043_ne and 280843_se. 					

7. Work Assignments

Vessel Response Team #1: North Division (Duval County)

- Day 1 - Continue vessel removal operations for F/V SWAMP FOX in Trout River, grid 3008135_SE, 1 OSRO.
- Day 2 - Complete vessel removal operations for F/V SWAMP FOX in Trout River, grid 3008135_SE, 2 OSROs. Ensure safe transport of vessel to staging area.

Vessel Response Team #2: Canaveral Division (Brevard County)

- Day 1 - Mobilize resources in Cape Canaveral.
- Day 2 - Conduct HAZMAT recovery and vessel removal operations in Banana River, grids 2806043_ne and 280843_se.

Station ESF-10 Situation Unit Desk (305) 371-4284	
Emergency Communications	
Medical 911	Evacuation Other
10. Prepared by: MSSR2 Shannon McGregor	Date/Time 31 OCT 17 1600
11. Reviewed by (PSC): LCDR Jeffrey Rubini	Date/Time 31 OCT 17 1500
12. Reviewed by (OSC): LTJG Samantha Cardoza	Date/Time 31 OCT 17 1600
ASSIGNMENT LIST (ICS 204-CG)	

What Items To Bring With You



Here are some basic items to consider packing as you prepare for deployment as a Resource Advisor

- Incident Management Handbook
- PFD as appropriate
- Wide brimmed hats
- Hard hats
- Safety glasses
- Gloves
- Multiple pairs of footwear to match your duties: work boots, rubber boots, etc., (**DO NOT show up to a barge or work site in open toe shoes**)
- Personal Floatation Device
- Sunscreen
- Insect spray
- Foul weather gear
- Clothing - 7 day supply of comfortable clothing
- Hygiene/Shower items and other personal items to last two weeks minimum.
- Medicines (aspirin, antihistamine, antacids as a minimum) and prescription medicines to last two weeks minimum
- Copies of training certificates (ICS courses, HAZWOPER, etc.)

Training You May Need



ICS-100 Introduction to Incident Command System (2 hours):

<https://training.fema.gov/is/courseoverview.aspx?code=IS-100.c>

ICS-200 ICS for Single Resources and Initial Action Incidents (4 hours):

<https://training.fema.gov/is/courseoverview.aspx?code=IS-200.c>

ICS-700 ICS An Introduction to the National Incident Management System (3.5 hours):

<https://training.fema.gov/is/courseoverview.aspx?code=IS-700.b>

ICS-800 National Response Framework, An Introduction (3 hours):

<https://training.fema.gov/is/courseoverview.aspx?code=IS-800.d>

Hazardous Waste Operations and Emergency Response (HAZWOPER):

<https://www.osha.gov/emergency-preparedness/hazardous-waste-operations/faq-hazpower> (USCG will require 24 hr. HAZWOPER for federally funded ESF-10 deployments)

Department of the Interior is in the process of updating basic, intermediate, and advanced Resource Advisor online training that will be available through DOI Talent:

https://www.doi.gov/doitalent/nondoi_learners

Best Management Practices Gone Right



Best Management Practices Gone Right



Best Management Practices Gone Right

USCG Irma ESF10 Natural Resource Advisor Site Monitoring Report (PAPER) v1.0		Form Transcribed Date/Time 12/22/17	
*Grid ID: (e.g. 2408124_mw)	*USCG Sector: (circle or highlight)		*Team ID:
2408122_SW_KW_VSL_011017-1851	KW MI SP JX		Florida Keys Branch Unit, Marathon
*Team Agency/Organization: (circle or highlight all that apply)			
USCG	EPA	FWC	FDEP FKNMS Other (specify):
*Team Member Names:		Target Sticker#:	
Lauri MacLaughlin/NOAA/SEGOM Robert Pereira/USCG/MST2 Phillip McLeod/USCG		Sticker #: 3281	
Target Location Place Name:	Latitude: (decimal degrees)	Longitude: (decimal degrees)	
Long Beach Blvd, Big Pine Key	24.647°N	-81.332°W	
Target Type: (circle or highlight)			
Vessel	Container	Vehicle	Debris Field
Removal Method Description/Comments:			
<p>Plan: Tow vessel to road bed, via tow truck cable, 6-12 Red mangroves in path, offload fuel *Key Deer check conducted, not present or seen pre- or post-Ops *11:50-12:50p: fuel & water tank pumped out, offload to lighter vessel, prevent HAZMAT spills *Attempted contact with FDEP for permission to cut mangroves substantially (>BMP limits) * USCG Branch Unit got Unit Command permission to pull vessel, w/no mangrove trim *1:00-2p: Vessel turned bow forward, towed slowly out path of least impact, approx. SE; mangrove impacts minimized by repositioning tow cable to redirect extraction route, to avoid taller plants; distance towed through mangrove community was limited to approximately 10-15 yards. 2-2:30p: Vessel retrieved in good condition (no obvious damage to the hull), then raised with two tow truck cranes, placed on trailer flatbed, transferred; Ops ended around 2:35 pm. Conclusion: This project is completed. No further work is required. Project closed out.</p>			
BMPs Implemented (circle or highlight):	Commendation & Explanation of BMPs applied:		
Yes / No	<p>FL Keys Towing and SWS Environmental Services crews did an excellent job of minimizing impact to mangroves trees, propagules, wetlands plants and mud flats. Strove to avoid taller, mature plants by selecting less vegetated route for extraction. Fuel offloading was conducted very professionally, water tank offload followup as a BMP allowed for flushing all hoses prior to demobilization, preventing any fuel from spilling into wetlands and the road bed. USCG Rob Pereira and Phillip McLeod were excellent facilitators and partners, consulting on all aspects of the extraction. The efforts made to turn the vessel bow-forward, resulted in far less injury to plants and contributed to their success in removal of the vessel. Injury to mangrove community was minimized significantly.</p>		
IF VESSEL			
Vessel Type:	Vessel Name:	Vessel Registration Number:	
Center Console, Open Fisher	CHAOS	FL 7862 MZ (04-18)	
Vessel Length (feet)	Vessel Make/Mode:	Vessel Hull Number:	
20	Triumph/Open fisherman (2005)	N/A - (see DHMSV Record sheet)	

Pre-Removal status of site from Long Beach Blvd.



Pre-Removal of site, close-up from Long Beach Blvd.



Post-Removal status of site from Long Beach Blvd.



Post-Removal close-up from Long Beach Blvd.



Questions?



Steve Werndli

Florida Keys National Marine
Sanctuary

P.O. Box 1083

Key Largo, FL 33037

Phone: 305-434-9371

Stephen.Werndli@noaa.gov

<http://floridakeys.noaa.gov>

